



Welcome to Bear Lake County, Idaho

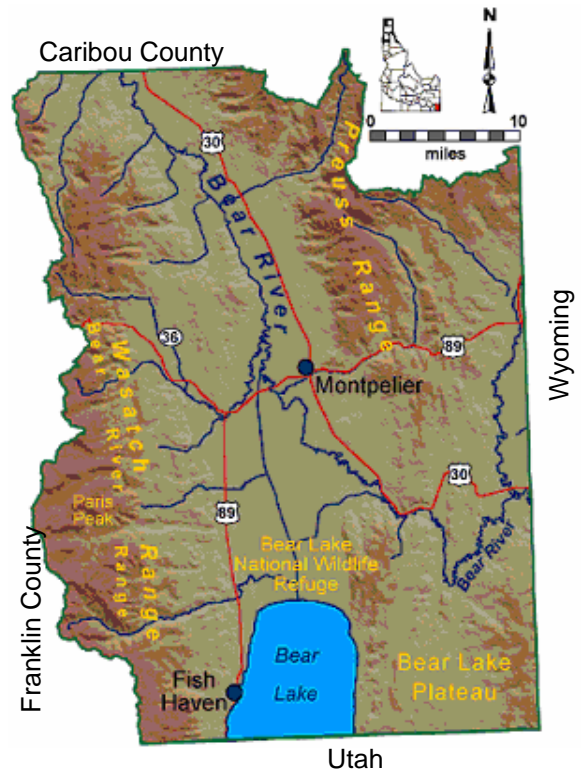
Location

Location:

Bear Lake County is located in the extreme southeastern corner of Idaho. Utah and Wyoming border the county on the south and east, respectively. Caribou County is to the north, and Franklin County is on the west. Bear Lake County was organized from part of Oneida County in 1875.

Major Highways:

Bear Lake County is a rural, agricultural area sitting at the junction of US Highway 89 and US Highway 30. Pocatello, Idaho, to the northwest; Logan, Utah, to the southwest, and Evanston, Wyoming, to the south, are each approximately 100 miles. Interstate Highways of I-80 and I-15 are both about 1 1/2 - 2 hours travel time from Bear Lake County.



Recreation and Tourist Attractions:

Bear Lake County is within reasonable distance (approximately 200-mile radius) of Jackson Hole, Wyoming; Grand Teton and Yellowstone National Parks; and Craters of the Moon National Monument. Bridger, Cache, and Caribou National Forests surround the county providing such activities as hunting, fishing, hiking, and camping.

A sampling of local attractions include the National Oregon/California Trail Center, Minnetoka Cave, Paris Tabernacle, Gutzon Borglum Monument, and beautiful Bear Lake. Bear Lake County also offers excellent fishing, hunting, camping, and a winter wonderland of snowmobile trails.

Transportation Facilities:

Travel to and from Bear Lake County is limited to personal automobiles and personal aircraft. Pocatello and Logan provide air shuttle services to larger airports in Boise, Idaho, and the Salt Lake International Airport in Salt Lake City, Utah. Bus service can be found in both Logan and Pocatello. Amtrak has stations in Ogden and Salt Lake City, Utah.

Union Pacific Railroad runs through the county with a customer service office in Montpelier.

Many major carriers provide service to the Bear Lake County area. Several have drop-off locations for outgoing packages. A number of county residents provide private trucking services.

Information compiled and edited by:

Cindy Teuscher
Extension Secretary

For more information contact:

Bear Lake County Extension Office
University of Idaho
9 North Main
P.O. Box 237
Paris, Idaho 83261-0237

1-208-945-2265

1-208-945-2262

bearlake@uidaho.edu

Telephone

FAX

email

Last Updated: 02/24/2004